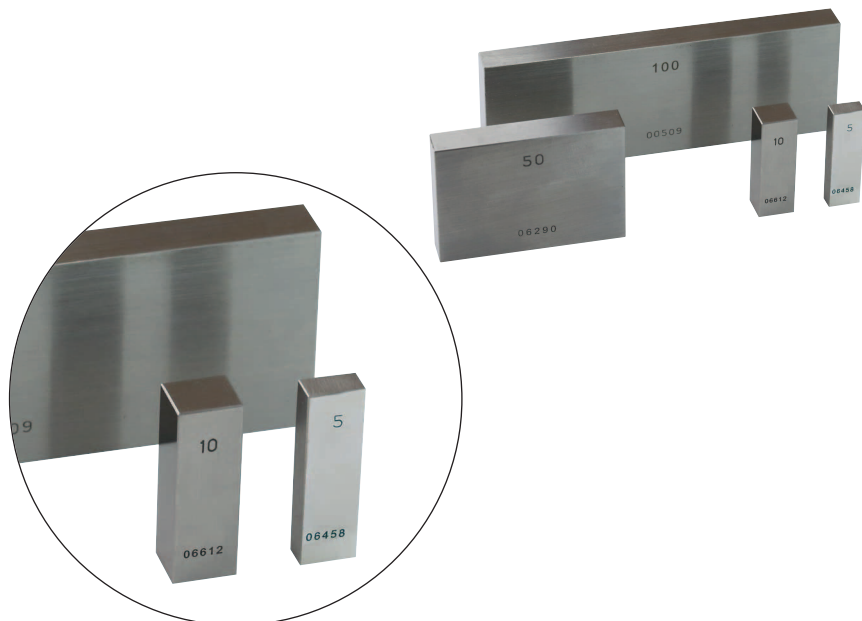


**EINZEL-ENDMASSE BIS 100 MM**  
*SINGLE GAUGE BLOCKS UNTIL 100 MM*



- aus Spezialstahl, gehärtet
- Querschnitt:  
 bis 30 mm 30 x 9 mm  
 ab 40 mm 35 x 9 mm
- Genauigkeit nach DIN EN ISO 3650
- wahlweise Güte 0 oder Güte 1

- *made of special steel, hardened*
- *dimension:*  
 up to 30 mm 30 x 9 mm  
 from 40 mm 35 x 9 mm
- *acc. to DIN EN ISO 3650*
- *optionally degree 0 or degree 1*

Querschnitt Profile	Nennmaß / Nominal Size mm	a mm	b mm
	0,5 - 10,1	30 <sup>+0,0</sup> <sub>-0,3</sub>	9 <sup>-0,05</sup> <sub>-0,20</sub>
	10,1 - 100,0	35 <sup>+0,0</sup> <sub>-0,3</sub>	

Güte 0 / Degree 0		Güte 1 / Degree 1		Güte 0 / Degree 0		Güte 1 / Degree 1		Güte 0 / Degree 0		Güte 1 / Degree 1	
Nennmaß Size mm	Art.-Nr. Item no.	Art.-Nr. Item no.	Nennmaß Size mm	Art.-Nr. Item no.	Art.-Nr. Item no.	Nennmaß Size mm	Art.-Nr. Item no.	Art.-Nr. Item no.	Nennmaß Size mm	Art.-Nr. Item no.	Art.-Nr. Item no.
0,5	319.005.0	319.005.1	1,3	319.013.0	319.013.1	10,0	319.100.0	319.100.1			
1,0	319.010.0	319.010.1	1,31	319.0131.0	319.0131.1	10,5	319.105.0	319.105.1			
1,0005	319.010005.0	319.010005.1	1,32	319.0132.0	319.0132.1	11,0	319.110.0	319.110.1			
1,001	319.01001.0	319.01001.1	1,33	319.0133.0	319.0133.1	11,5	319.115.0	319.115.1			
1,002	319.01002.0	319.01002.1	1,34	319.0134.0	319.0134.1	12,0	319.120.0	319.120.1			
1,003	319.01003.0	319.01003.1	1,35	319.0135.0	319.0135.1	12,5	319.125.0	319.125.1			
1,004	319.01004.0	319.01004.1	1,36	319.0136.0	319.0136.1	13,0	319.130.0	319.130.1			
1,005	319.01005.0	319.01005.1	1,37	319.0137.0	319.0137.1	13,5	319.135.0	319.135.1			
1,006	319.01006.0	319.01006.1	1,38	319.0138.0	319.0138.1	14,0	319.140.0	319.140.1			
1,007	319.01007.0	319.01007.1	1,39	319.0139.0	319.0139.1	14,5	319.145.0	319.145.1			
1,008	319.01008.0	319.01008.1	1,4	319.014.0	319.014.1	15,0	319.150.0	319.150.1			
1,009	319.01009.0	319.01009.1	1,41	319.0141.0	319.0141.1	15,5	319.155.0	319.155.1			
1,01	319.0101.0	319.0101.1	1,42	319.0142.0	319.0142.1	16,0	319.160.0	319.160.1			
1,02	319.0102.0	319.0102.1	1,43	319.0143.0	319.0143.1	16,5	319.165.0	319.165.1			
1,03	319.0103.0	319.0103.1	1,44	319.0144.0	319.0144.1	17,0	319.170.0	319.170.1			
1,04	319.0104.0	319.0104.1	1,45	319.0145.0	319.0145.1	17,5	319.175.0	319.175.1			
1,05	319.0105.0	319.0105.1	1,46	319.0146.0	319.0146.1	18,0	319.180.0	319.180.1			
1,06	319.0106.0	319.0106.1	1,47	319.0147.0	319.0147.1	18,5	319.185.0	319.185.1			
1,07	319.0107.0	319.0107.1	1,48	319.0148.0	319.0148.1	19,0	319.190.0	319.190.1			
1,08	319.0108.0	319.0108.1	1,49	319.0149.0	319.0149.1	19,5	319.195.0	319.195.1			
1,09	319.0109.0	319.0109.1	1,5	319.015.0	319.015.1	20,0	319.200.0	319.200.1			
1,1	319.011.0	319.011.1	1,6	319.016.0	319.016.1	20,5	319.205.0	319.205.1			
1,11	319.0111.0	319.0111.1	1,7	319.017.0	319.017.1	21,0	319.210.0	319.210.1			
1,12	319.0112.0	319.0112.1	1,8	319.018.0	319.018.1	21,5	319.215.0	319.215.1			
1,13	319.0113.0	319.0113.1	1,9	319.019.0	319.019.1	22,0	319.220.0	319.220.1			
1,14	319.0114.0	319.0114.1	2,0	319.020.0	319.020.1	22,5	319.225.0	319.225.1			
1,15	319.0115.0	319.0115.1	2,5	319.025.0	319.025.1	23,0	319.230.0	319.230.1			
1,16	319.0116.0	319.0116.1	3,0	319.030.0	319.030.1	23,5	319.235.0	319.235.1			
1,17	319.0117.0	319.0117.1	3,5	319.035.0	319.035.1	24,0	319.240.0	319.240.1			
1,18	319.0118.0	319.0118.1	4,0	319.040.0	319.040.1	24,5	319.245.0	319.245.1			
1,19	319.0119.0	319.0119.1	4,5	319.045.0	319.045.1	25,0	319.250.0	319.250.1			
1,2	319.012.0	319.012.1	5,0	319.050.0	319.050.1	30,0	319.300.0	319.300.1			
1,21	319.0121.0	319.0121.1	5,5	319.055.0	319.055.1	40,0	319.400.0	319.400.1			
1,22	319.0122.0	319.0122.1	6,0	319.060.0	319.060.1	50,0	319.500.0	319.500.1			
1,23	319.0123.0	319.0123.1	6,5	319.065.0	319.065.1	60,0	319.600.0	319.600.1			
1,24	319.0124.0	319.0124.1	7,0	319.070.0	319.070.1	70,0	319.700.0	319.700.1			
1,25	319.0125.0	319.0125.1	7,5	319.075.0	319.075.1	75,0	319.750.0	319.750.1			
1,26	319.0126.0	319.0126.1	8,0	319.080.0	319.080.1	80,0	319.800.0	319.800.1			
1,27	319.0127.0	319.0127.1	8,5	319.085.0	319.085.1	90,0	319.900.0	319.900.1			
1,28	319.0128.0	319.0128.1	9,0	319.090.0	319.090.1	100,0	320.100.0	320.100.1			
1,29	319.0129.0	319.0129.1	9,5	319.095.0	319.095.1						