

# GX1 SERIES PRODUCTS INTRODUCTION

G31, G41, G41H, G61, G61H



# CONTENTS

1. **PRODUCT OVERVIEW**
2. **KEY FEATURES**
3. **SOFTWARE AND APPLICATIONS**



*01.*

# Product Overview



# Naming Rules

**G 6 1 H - L25**

## Product Series

G: G Series

## Resolution

3: 384×288

4: 480×360

6: 640×512

## Generation

Default/0: 1<sup>st</sup> Gen.

1: 2<sup>nd</sup> Gen.

## Extended Features

H: High Temp. Series

W: Wide FOV

L: Thermal only

## Interchangeable lens

L25: 25 Degree Lens

L50: 50 Degree Lens

L12: 12 Degree Lens

L8: 8 Degree Lens



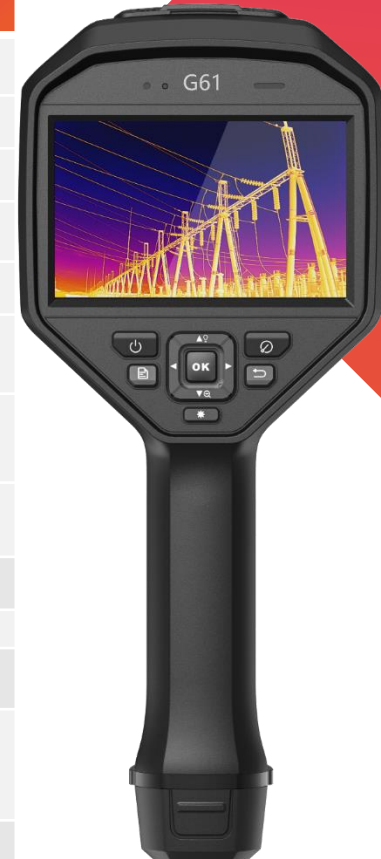
**G31/G41/G41H/G61/G61H**

# Product Overview



- The new Gx1 series builds on the success of the current model and offers faster focusing, additional zoom capabilities, and new high temperature modes.
- In addition to retaining the powerful functions of Gx0, Gx1 series provides **more model choices** to meet the needs of customers with different budgets to make the most suitable choice for them.
- At the same time, the **Add-on lenses** can satisfy different scenario detection needs, with the **2-second focus speed** and the new **ultra-high temperature models** making the Gx1 series perform better in electric and industrial scenarios.

Basic Parameters	G31	G41	G41H	G61	G61H	G40	G60
IR Resolution	384 x 288	480 x 360	480 x 360	640 x 480	640 x 480	480 x 360	640 x 480
SuperIR	768 x 576	960 x 720	960 x 720	1280 x 960	1280 x 960	960 x 720	1280 x 960
NETD	< 35 mK (@ 25 °C, F#=1.0)					< 35 mK (@ 25 °C, F#=1.0)	
Image Frequency	50 Hz					50 Hz	
Focal Length	15 mm	25 mm	25 mm	25 mm	25 mm	25 mm	
Field of View (FOV)	25° × 19°	18.7° × 14°	18.7° × 14°	25° × 19°	25° × 19°	18.7° × 14°	25° × 19°
Spatial Resolution (IFOV)	1.13 mrad	0.68 mrad	0.68 mrad	0.68 mrad	0.68 mrad	0.68 mrad	
Focus Mode	Laser Assisted AF/Continuous AF/AF/Manual Focus/Touch AF					Laser Assisted AF/Continuous AF/AF/Manual Focus/Touch AF	
Focus Speed	Approx. 2 second					Approx. 3 second	
Visual Camera	3264 × 2448 (8 MP)					3264 × 2448 (8 MP)	
Digital Zoom	1.x to 8.x continuous					1x, 2x, 4x, 8x	
Object Temperature Rang	-20 °C to 650 °C (-4 °F to 1202 °F)	-20 °C to 650 °C (-4 °F to 1202 °F)	20 °C to 2000 °C (-4 °F to 3632 °F)	-20 °C to 650 °C (-4 °F to 1202 °F)	-20 °C to 2000 °C (-4 °F to 3632 °F)	-20 °C to 650 °C (-4 °F to 1202 °F)	
HDMI Interface	Yes					N/A	
GPS & Compass	Yes					N/A	



# Call outs



# Gx1 Series - Packing Lists



- Handheld Thermography Camera
- 64GB Micro SD card
- Rechargeable Battery (x3)
- Charging Base
- Power Adapter
- International Use Plugs (US/EU/UK/AU) for Power Supply (x4)
- USB 2.0 A to USB Type-C Cable
- Mini HDMI to HDMI Cable

- Lens Cover
- Hand Strap
- Accessory Bag
- User Manual
- Calibration Certificate
- Quick Start Guide
- Packing List
- Carrying Case
- Aperture (G41H/G61H Only)

# Gx1 Series - Optional Accessories

## Gx1 Series



### Replacement Battery

( INR18650-35E-1S2P )

- 6700 mAh, 3.6 V



### Replacement 2-Bay Battery Charger

( HM-5202ZC )

- Input 100~240 V / 0.7 A
- Output 12 V / 2 A



### Sun Shield

( HM-SP01-POUCH )

- PC+ABS
- 125.9mm × 115.9mm × 71.9mm  
(4.9" × 4.5" × 2.8")

## All Series



### Pouch

( HM-SP01-POUCH )

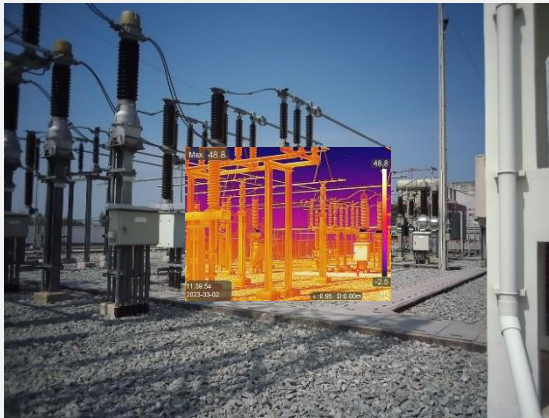
- 100% Polyester
- 27.5 cm c 13 cm × 21 cm  
(10.8" × 5.1" × 8.3")

The Gx1 series comes with three batteries in the box, and optional batteries are also available

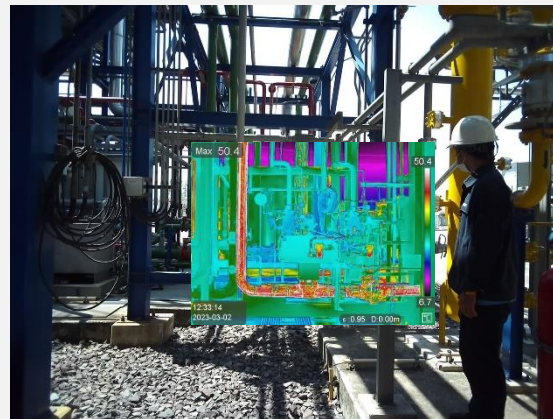


# Gx1 Series - Application Scenarios

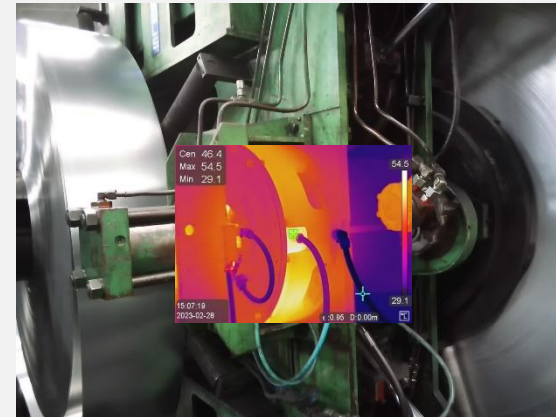
## Users and Benefits



**Electric Utilities**



**Facility Maintenance**



**Manufacturer**



**Kilns**

- Building Professionals/ Inspectors/ Engineers/ Researchers/ Facility Maintenance Personnel

# 02.

## Key Features

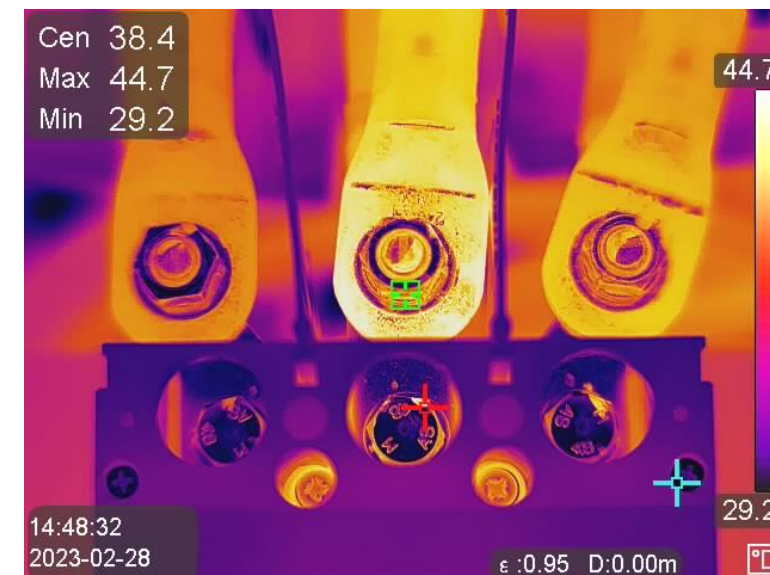
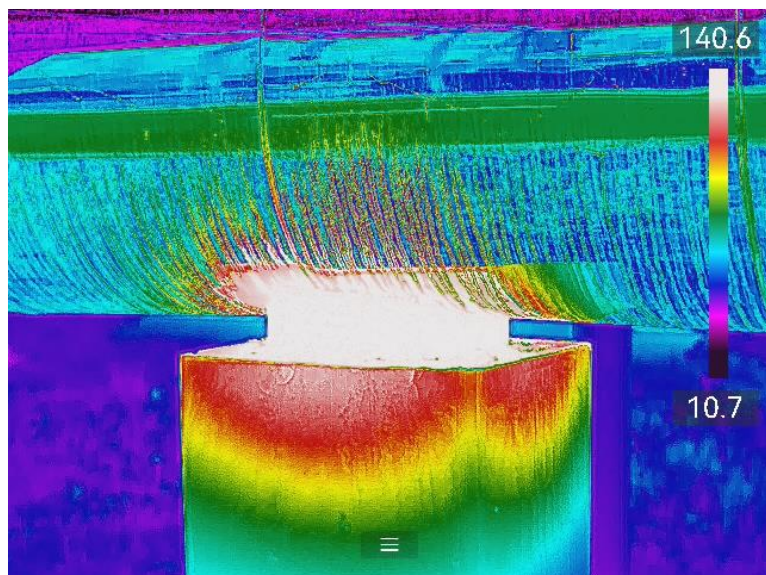


# Gx1 Series - Ultra High Resolution

Up to 640x480 @35mK NETD

A highly sensitive VOx detector with 640 x 480 (307,200 pixels)IR resolution, provides a distinct thermal vision of the target.

High quality image quality to enhance user experience. Clear images allow users to find equipment faults more accurately.



\* Above 3 images captured by G61

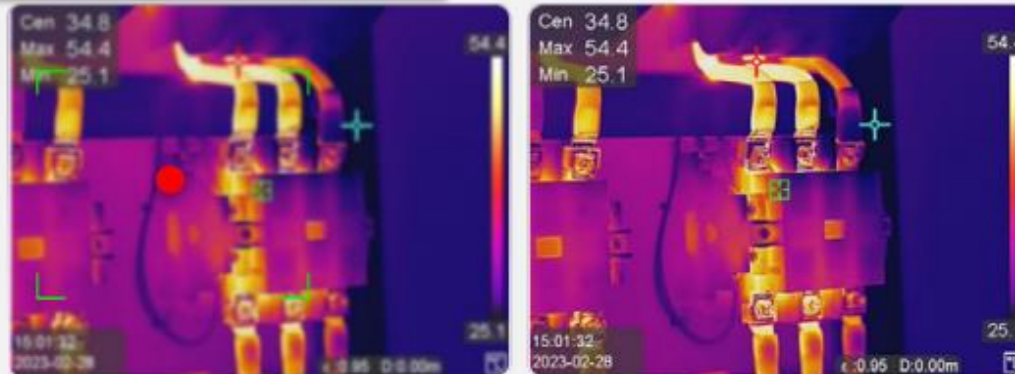
# Gx1 Series - More Efficient Inspection

## 5 Quick Focus Modes

Support for 5 focus modes and a fast focus speed of 2 seconds help save time by providing sharper images for more accurate temperature measurements.

- **Laser Assisted AF:** For complex devices, the laser will accurately select the measurement area for you.
- **Continuous AF:** Quickly scan the area to improve efficiency.
- **AF:** New upgrade of fast focus, faster to find the location of the problem.
- **Manual Focus:** Not limited by distance.
- **Touch AF:** Supports focusing in five different areas of the screen for more accurate focus on the target.

### Two-second Fast focusing



Continuous  
Autofocus



Autofocus



Laser Assisted  
Focus



Touch AF



Touch AF

# Gx1 Series - More Efficient Inspection

## 3 Add-on Lenses 【G31】

3 Add-on Lens 0.5X, 2X, and 3.3X are available for choice. Different tele converter gives different Field Of View, which gives more choices when facing different scenarios.

For most factory environments, the standard lens can cover the user's inspection needs. Detection of equipment at high places and more complex environments with three optional lenses. Allowing users to more safely target electrical equipment, factory machinery and equipment.



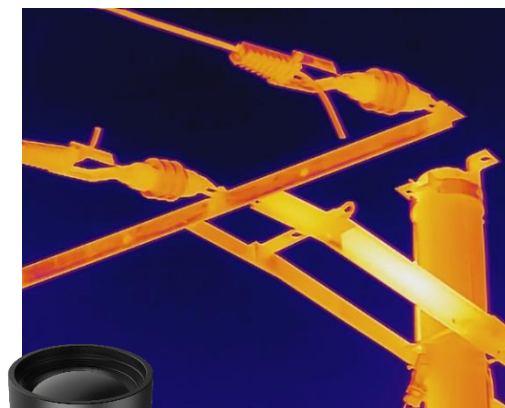
**HM-G305-LENS1**

Focal Length	7.5 mm
FOV (Field of View)	G31:50°(H) × 37.4°(V)
Min. Focusing Distance	0.2 m (0.7 ft)



**HM-G320-LENS1**

Focal Length	30.6 mm
FOV (Field of View)	G31:12°(H) × 9°(V)
Min. Focusing Distance	1 m (3.3 ft)



**HM-G330-LENS1**

Focal Length	53.5 mm
FOV (Field of View)	G31:7°(H) × 5.2°(V)
Min. Focusing Distance	2 m (6.6 ft)

# Gx1 SERIES - MORE EFFICIENT INSPECTION

## 3 Add-on Lenses 【G41/G61】

3 Add-on Lens 0.5X, 2X, and 3.3X are available for choice. Different tele converter gives different Field Of View, which gives more choices when facing different scenarios.

For most factory environments, the standard lens can cover the user's inspection needs. Detection of equipment at high places and more complex environments with three optional lenses. Allowing users to more safely target electrical equipment, factory machinery and equipment.



**HM-G605-LENS1**

Focal Length	13 mm
FOV (Field of View)	G61/G61H: 48.2°(H) x 36°(V) G41/G41H: 35.4°(H) x 26.2°(V)
Min. Focusing Distance	0.2 m (0.22 yd)



**HM-G620-LENS1**

Focal Length	50 mm
FOV (Field of View)	G61/G61H: 12.3°(H) x 9.3°(V) G41/G41H: 9.3°(H) x 7°(V)
Min. Focusing Distance	2 m (2.19 yd)



**HM-G630-LENS1**

Focal Length	82 mm
FOV (Field of View)	G61/G61H: 7.6°(H) x 5.7°(V) G41/G41H: 5.7°(H) x 4.3°(V)
Min. Focusing Distance	3 m (3.28 yd)

# Gx1 Series - More Efficient Inspection

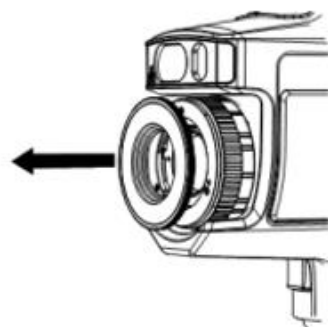
## Aperture 【G41H/G61H】

- G41H/G61H only with standard lens



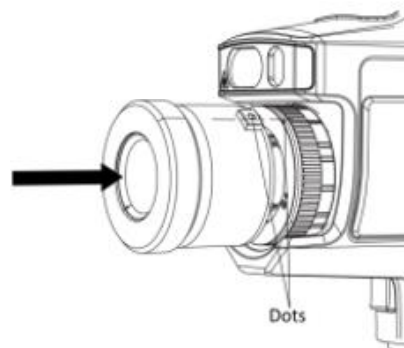
01

Turn the decorative ring anticlockwise to remove the decorative ring.



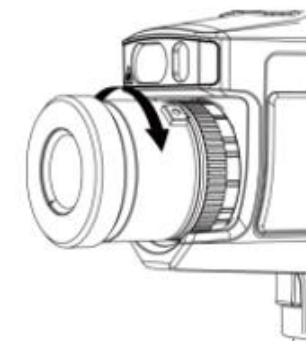
02

Align the two dots on the aperture and the device.



03

Rotate the aperture clockwise to finish mounting.



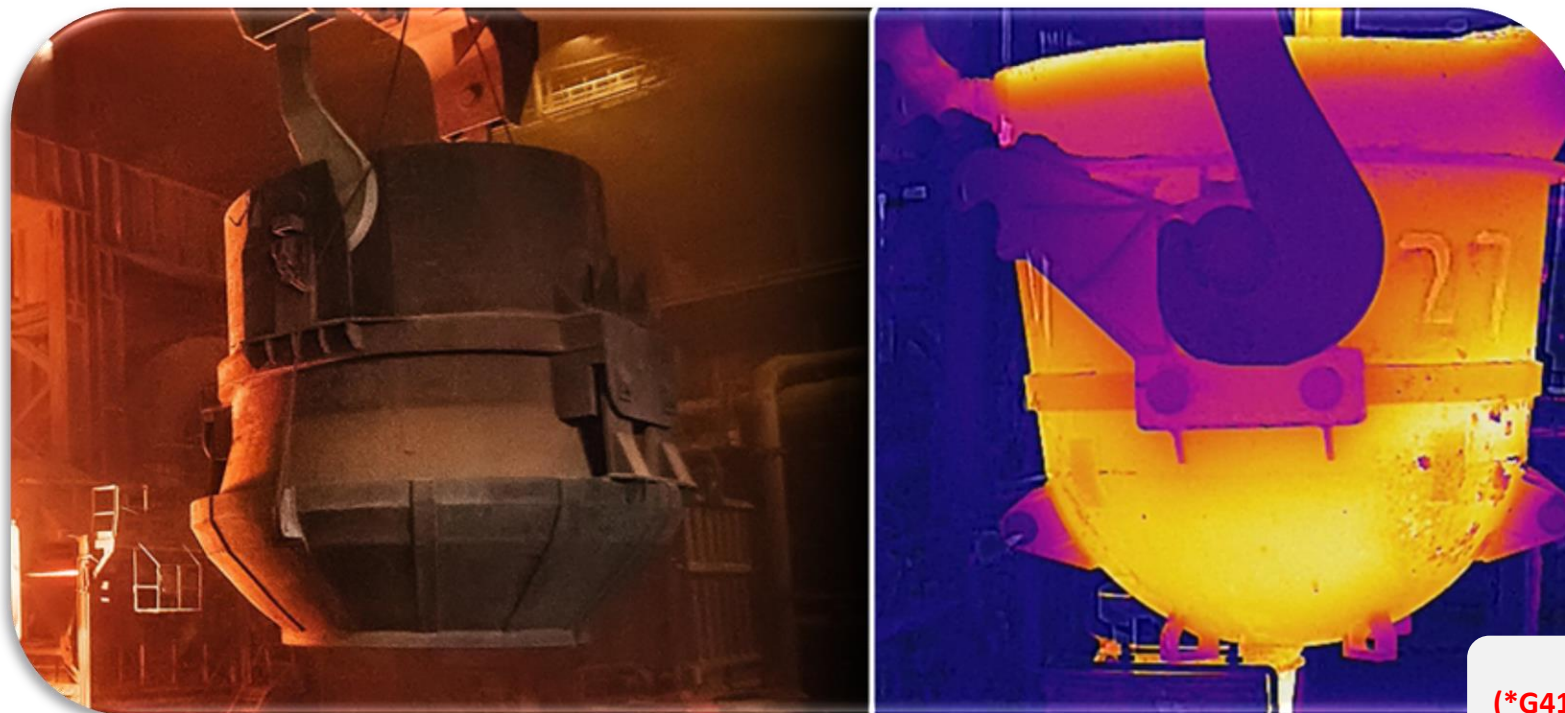
If you want to add another lens, please **remove** the aperture.

# Gx1 Series – Ultra High Temperature

Up to 2000°C Temperature Range

With a measurement range of up to 2000°C (3992°F), it can handle industrial furnace applications, refractory, and inspecting tools/fixtures in metal smelting at these extreme temperatures.

The higher temperature range makes it perform well in high-temperature and can be detected in harsh industrial environments to help work smoothly.



(\*G41H/G61H only)



# Gx1 Series – Interchangeable Battery System

Includes **3** interchangeable Li-ion batteries and a dual bay charger to provide you with **up to 12 hours** of operation. You can stay powered up for even the longest inspections.



## 4 International Use Plugs

(US/EU/UK/AU) for Power Supply



Basic Parameters

G31

G41

G41H

G61

G61H

Battery Life

4 hours x 3

# Gx1 Series – Embedded Laser Distance Meter

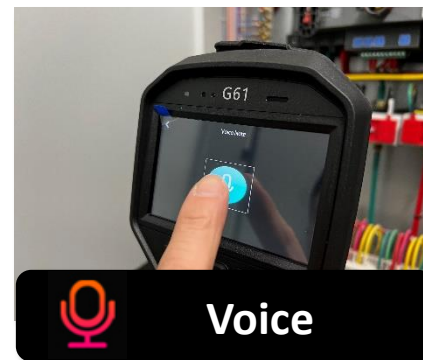
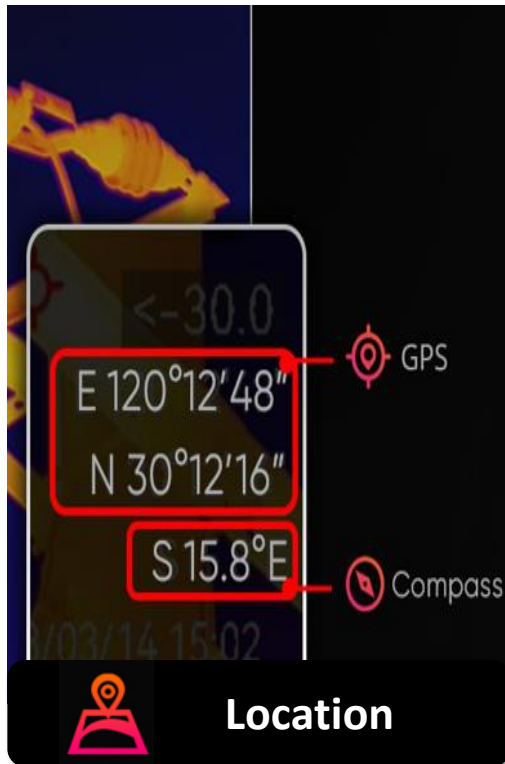
An integrated laser distance meter provides **Accurate Distance** and **Area Measurement** from long distances, more convenient in setting parameters and generating the report.



# Gx1 Series – Complete Image Annotations

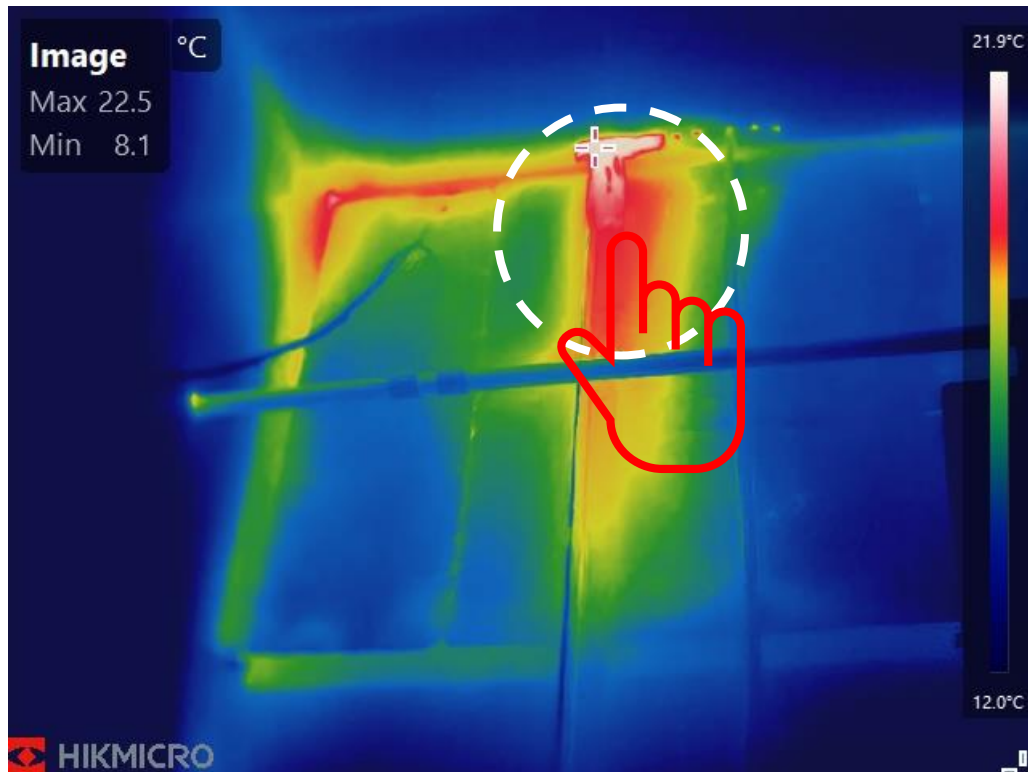
In addition to supporting **voice**, **text** and **QR Code Scan** annotations, **GPS** and **compass functions** automatically add location and direction information to the image, helping to improve inspection efficiency and productivity.

**NEW**

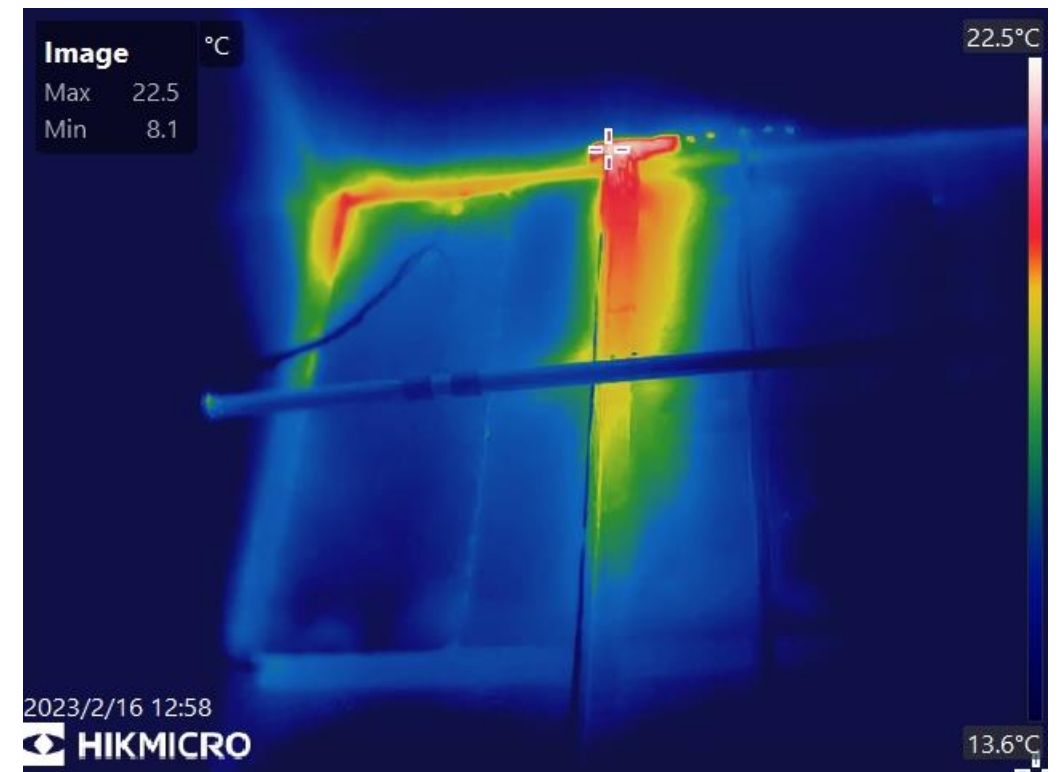


# Gx1 Series – 1-Tap Level & Span

Quickly highlights the area of the image you are interested in by narrowing the span with one tap on the 3.5" LCD touchscreen, instantly improving image contrast and highlighting potential problems.

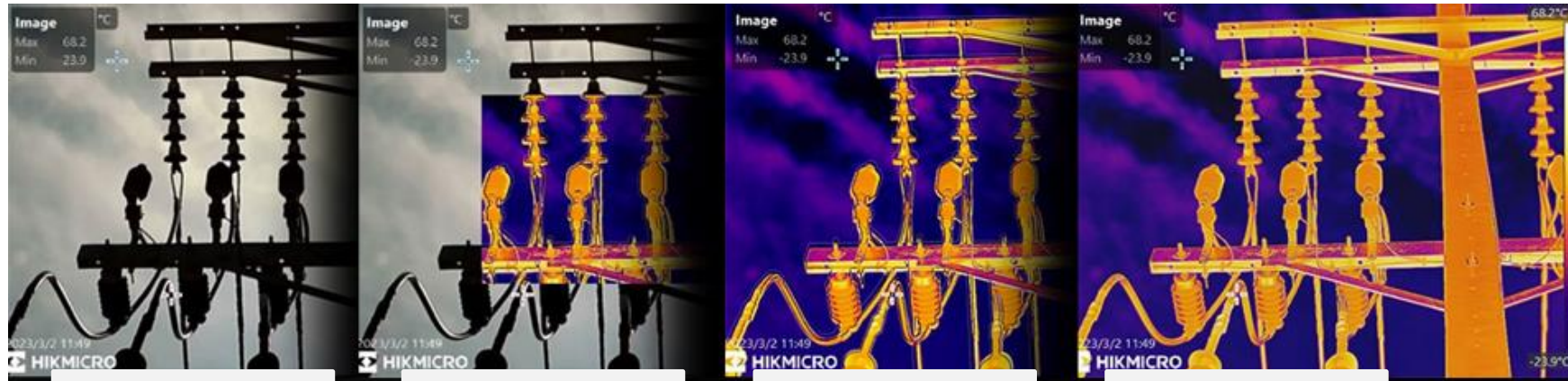


1-Tap  
→



# Gx1 Series – 5 Image Mode

Thermal, Fusion, PIP, Blending and Optical modes to suit your preferred.

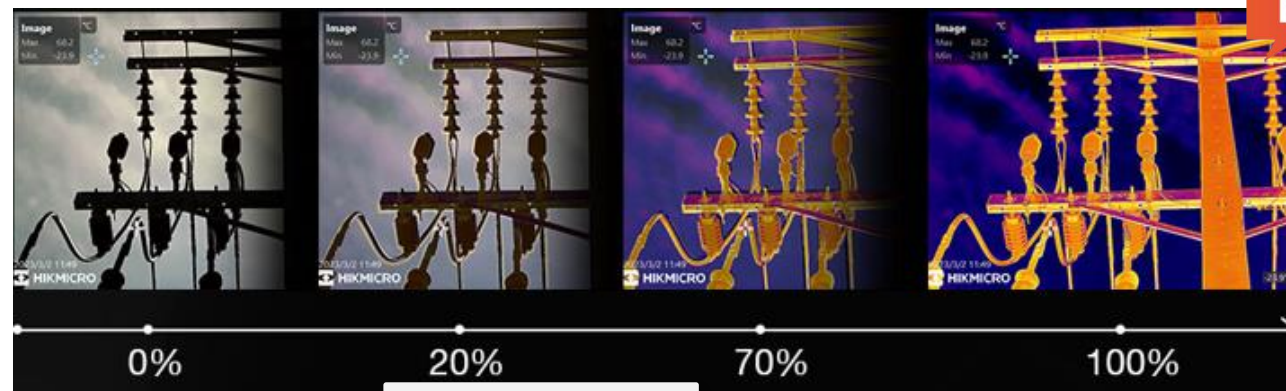


Optical

PIP

Fusion

Thermal



Blending

03.

# Software and Applications



HIKMICRO  
Analyzer



HIKMICRO  
Viewer



# Software - HIKMICRO Analyzer



## EFFICIENT, POWERFUL THERMAL ANALYSIS AND REPORTING

HIKMICRO Analyzer is a powerful and free licensed PC software designed to help users manage and analyze thousands of thermal images and videos and quickly create professional reports. Compatible with files from HIKMICRO handheld thermal cameras, providing the features you need to simplify your workflow and increase your productivity.

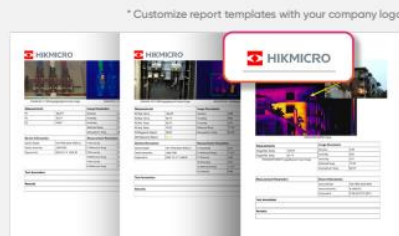
### Capture Field Images



### Powerful Analysis Tools



### Generate Multi-page Reports



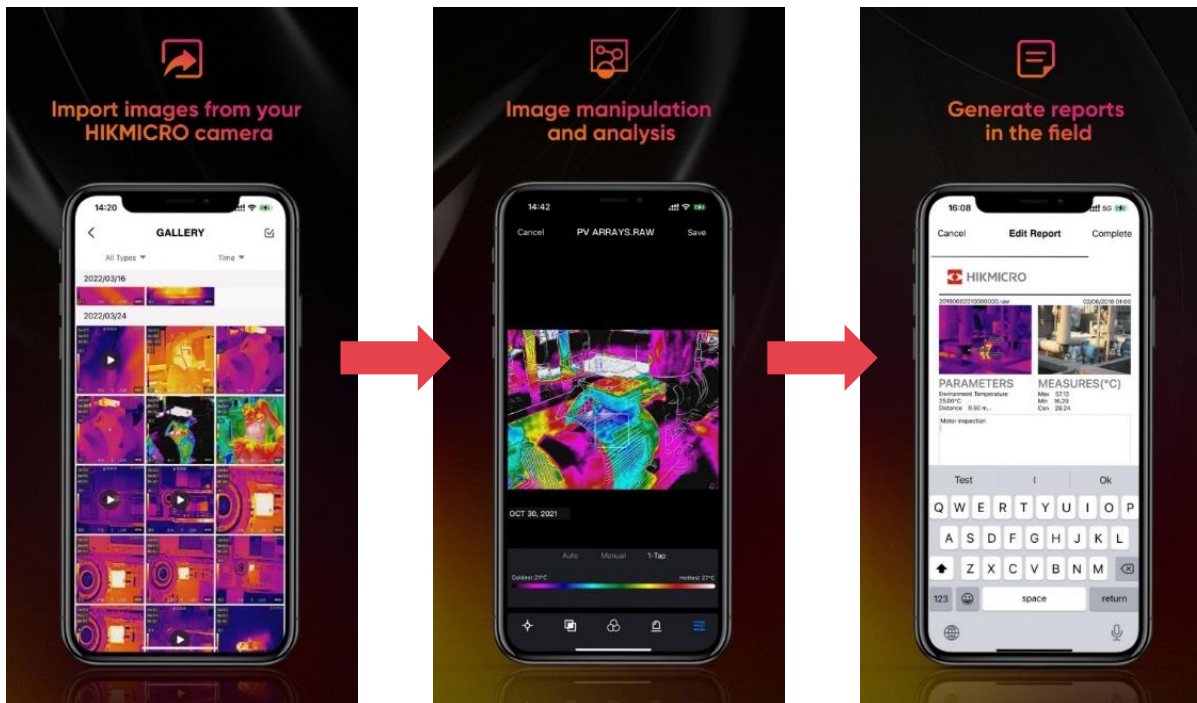
- Free license
- Import, edit and manage files
- View, edit and analysis radiometric images and videos
- Advanced measurement and image analysis
- Batch processing with all image and measurement controls
- Quick reporting with pre-defined or customized templates

# Applications - HIKMICRO Viewer



## WIRELESS ANALYSIS, REPORTING AND SHARING

The HIKMICRO Viewer is a powerful and intuitive mobile application designed to help users wirelessly stream video, analyze thermal images and video, quickly create reports and share with customers and coworkers in the field. It allows you to import stored files from the camera to the mobile device. Use the app to thermally adjust levels and spans with one touch, change color palettes, adjust parameters, and more.





- Free license
- Screen Stream Mirroring
- Import images and videos from camera
- Advanced measurement and image analysis
- Quick reporting and sharing
- After-sales contacts and online support services






Download at:  
<https://www.hikmicrotech.com/en/product-c-detail/19>



# G61/61H Comparison

Basic Parameters	G61/61H	FLIR E96	Fluke Ti480 PRO	FOTRIC 348A
Image				
IR Resolution	640 x 480	640 × 480	640 x 480	640 x 480
NETD	< 35 mK (@ 25 °C, F#=1.0)	<40 mK at 30°C (86°F)	≤0.05 °C (50 mK)	< 0.04°C
Image Frequency	50 Hz	30 Hz	60 Hz or 9 Hz versions	30Hz
Focus Mode	Laser Assisted AF/Continuous AF/AF/Manual Focus/Touch AF	Continuous LDM, one-shot LDM, one-shot contrast, manual, Autofocus	LaserSharp Auto Focus/ Manual Focus	Auto focus
Object Temperature Rang	-20 °C to 650 °C (-4 °F to 1202 °F) -20 °C to 2000 °C (-4 °F to 3632 °F)	-20°C to 120°C (-4°F to 248°F); 0°C to 650°C (32°F to 1202°F); 300°C to 1500°C (572°F to 2732°F)	-20 °C to +1,000 °C (-4 °F to 1,832 °F)	-20°C to 120°C (-4°F to 248°F); 0°C to 650°C(32°F to 1202°F); 300°C to 1550°C(572°F to 2822°F);
HDMI Interface	Yes	Yes	Yes	Yes
GPS & Compass	Yes	Yes	N/A	Yes
Battery Operating Time	Approx. 4 hours	Approx. 2.5 hours	2.5 hours	4 hours
Lenses	Standard Lens: 25° × 19° Available lenses: 7.6°x 5.7°, 12.3°x 9.3°, 48.2° x 36°	Available lenses: 14°, 24°, 42°	Standard Lens: 34 °H x 24 °V Available lenses: 6.0° x 4.5° , 12 ° x 9 °	Standard Lens: 25°×19° Available lenses: 7°x 5°, 12°x 9°, 44°x 34°
Warranty	3-year coverage on the camera and 10-year coverage for the detector	2-year coverage on the camera and 10-year coverage for the detector	Two-years (standard)	2 years (standard), 10 years for core detector
HIKMICRO Advantage	1. Better image quality (NETD 35 mK) 2. 5 focus mode 3. Better add-in lenses 4. Higher temperature measurement range 5. Longer battery life 6.3-year coverage on the camera and 10-year coverage for the detector 7.Better Price			

# G41/41H Comparison

Basic Parameters	G41/G41H	FLIR E86	FOTRIC 347A
Image			
IR Resolution	480 x 360	464 × 348	480 x 360
NETD	<b>&lt; 35 mK (@ 25 °C, F#=1.0)</b>	<40 mK at 30°C (86°F)	< 0.04°C
Image Frequency	50 Hz	30 Hz	30Hz
Focus Mode	<b>Laser Assisted AF/Continuous AF/AF/Manual Focus/Touch AF</b>	Continuous LDM, one-shot LDM, one-shot contrast, manual, Autofocus	TurboFocus speedy Intelligent Auto focus system for continuous, laser distance, graphic contrast, manual
Object Temperature Rang	-20 °C to 650 °C (-4 °F to 1202 °F) <b>-20 °C to 2000 °C (-4 °F to 3632 °F)</b>	-20°C to 120°C (-4°F to 248°F); 0°C to 650°C (32°F to 1202°F); 300°C to 1500°C (572°F to 2732°F)	-20°C to 150°C (-4°F to 302°F); 0°C to 650°C (32°F to 1202°F); 200°C to 1200°C (392°F to 2192°F);
HDMI Interface	Yes	Yes	Yes
GPS & Compass	Yes	Yes	Yes
Battery Operating Time	<b>Approx. 4 hours</b>	Approx. 2.5 hours	4 hours
Lenses	Standard Lens: 18.7° × 14° Add-on Lens: 5.7°x 4.3°, 9.3°x 7°, 35.4°x 26.2°(G41 Only)	Available lenses: 14°, 24°, 42°	Standard Lens: 25°x 19° Available lenses: 7°x 5°, 12°x 9°, 44°x 34°
Warranty	<b>3-year coverage on the camera and 10-year coverage for the detector</b>	2-year coverage on the camera and 10-year coverage for the detector	2 years (standard), 10 years for core detector
<b>HIKMICRO Advantage</b>	<b>1. Better image quality (NETD 35 mK) 2. 5 focus mode 3. Better add-in lenses 4. Higher temperature measurement range 5. Longer battery life 6.3-year coverage on the camera and 10-year coverage for the detector 7.Better Price</b>		

# G31 Comparison

Basic Parameters	G31	FLIR E76	Testo 883	FOTRIC 346A
Image				
IR Resolution	384 x 288	320 x 240	320 x 240	384 x 288
NETD	< 35 mK (@ 25 °C, F#=1.0)	<40 mK	< 40 mK	< 0.04°C
Image Frequency	50 Hz	30 Hz	27 Hz	30Hz
Focus Mode	Laser Assisted AF/Continuous AF/AF/Manual Focus/Touch AF	Continuous LDM, one-shot LDM, one-shot contrast, manual, Autofocus	Manual Focus	TurboFocus speedy Intelligent Auto focus system for continuous, laser distance, graphic contrast, manual
Object Temperature Rang	-20 °C to 650 °C (-4 °F to 1202 °F)	-20°C to 120°C (-4°F to 248°F); 0°C to 650°C (32°F to 1202°F)	-30 to +650°C	-20°C to 150°C (-4°F to 302°F); 0°C to 650°C (32°F to 1202°F); 200°C to 1200°C (392°F to 2192°F);
HDMI Interface	Yes	Yes	N/A	Yes
GPS & Compass	Yes	Yes	N/A	Yes
Battery Operating Time	Approx. 4 hours	2.5 hours	≥ 5 h	4 hours
Lenses	Standard Lens: 25° x 19° Add-on Lens: 7° x 5.2°, 12° x 9°, 50° x 37.4°(G61 Only)	Available lenses: 14°, 24°, 42°	Standard Lens: 30° x 23° Available lenses: 12° x 9°	Standard Lens: 25° x 19° Available lenses: 7° x 5°, 15° x 11°, 44° x 34°
Warranty	3-year coverage on the camera and 10-year coverage for the detector	2-year coverage on the camera and 10-year coverage for the detector	2 years (standard), 10 years for core detector	2 years (standard), 10 years for core detector
HIKMICRO Advantage	1. Better image quality (NETD 35 mK) 2. 5 focus mode 3. Better add-in lenses 4. 3-year coverage on the camera and 10-year coverage for the detector 5. Better Price			